

PROGRAM PRZESŁUCHAŃ KONKURSOWYCH  
**AKADEMIA SINFONIA VARSOVIA**

**KONTRABAS**

1. UTWOR SOLOWY

- K. D. von Dittersdorf: Koncert D-dur - *I część z kadencją*

2. PARTIE ORKIESTROWE:

- W. A. Mozart: Symfonia nr 40 g-moll KV 550 - *I część, takty 114-299*
- L. van Beethoven: Symfonia nr 9 d-moll op. 125 - *recytatyw (Presto) takty 8-90*
- G. Mahler: Symfonia nr 2 c-moll - *I część, takty 1-41*

3  
2

VIOLONCELLO e BASSO

Musical score for Violoncello and Bass, measures 105-197. The score is written in bass clef with a key signature of two flats (B-flat and E-flat). The tempo is marked 'Allegretto'.

Measures 105-113: Bass line with dynamics *p* and *f*. A red bracket highlights measures 114-120.

Measures 114-120: Bass line with dynamics *f*. A red bracket highlights measures 114-120.

Measures 120-127: Bass line with dynamics *f*.

Measures 128-132: Bass line with dynamics *f*.

Measures 133-135: Bass line with dynamics *f*. A box labeled 'C' is above measure 135.

Measures 136-147: Bass line with dynamics *f*. A box labeled 'C' is above measure 135. Violin I and Violoncello parts are shown above the bass line.

Measures 148-153: Bass line with dynamics *f*. A box labeled 'C' is above measure 135. Bassi part is shown above the bass line.

Measures 154-159: Bass line with dynamics *f*.

Measures 160-172: Bass line with dynamics *p*. A box labeled 'D' is above measure 160. Violin I part is shown above the bass line.

Measures 173-182: Bass line with dynamics *f*.

Measures 183-187: Bass line with dynamics *p* and *f*.

Measures 188-196: Bass line with dynamics *f*.

Measures 197-199: Bass line with dynamics *f*.

VIOLONCELLO e BASSO

204

210

215

222

229

242

249

254

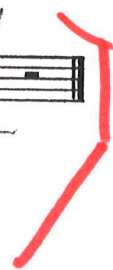
262

269

276

282

291





Violoncello e Contrabbasso

149 *cresc.* **C** *f* *pizz.* *p*

153 *pp* *cresc.* *fz* *fp* *p* *f* *pizz.*

**Presto**  $\text{♩} = 96$  *f* *Legni*

11 *dim.* *p* *Fag.*

22 *f* *Fag.*

**Allegro ma non troppo**  $\text{♩} = 88$  *pp* *div.*

38 **Tempo I** *f* *ff* *ritard.* *dim.*

45 *poco Adagio* *Vello. pizz.* *Vivace*

56 **Tempo I** *f* *dim.* *Adagio cantabile* *Fag. I*

65 **Tempo I Allegro** *p* *cresc.* *ff*

75 *Fag. I* **Allegro assai**  $\text{♩} = 80$  *Fag. I* **Tempo I Allegro** *f* *ff*

84 *f* *sf* *Fag.*

Gustav Mahler  
Symphony No. 2 in C Minor

Contrabass.

I.

Allegro maestoso. Mit durchaus ernstem und feierlichem Ausdruck.

*wild* *sf* *fff* *fff* *ff accel.*  
*a tempo* *immer wuchtig*  
*mf*  
*ff* *ff* *f*  
*p subito* *f* *p* *f* *p*  
*geth.* *unisono*  
*f* *p* *mf* *p*  
*ppp* *sempre pp*  
*fp* *mf*  
*sempre cresc.*  
*tremol.* *ff* *pp molto cresc.*